



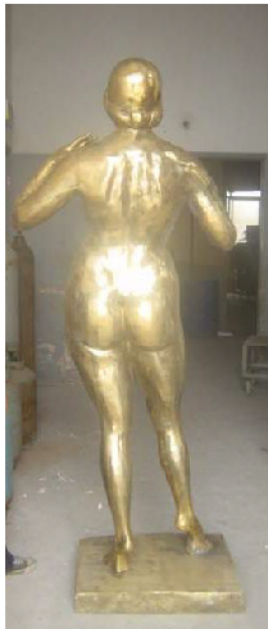
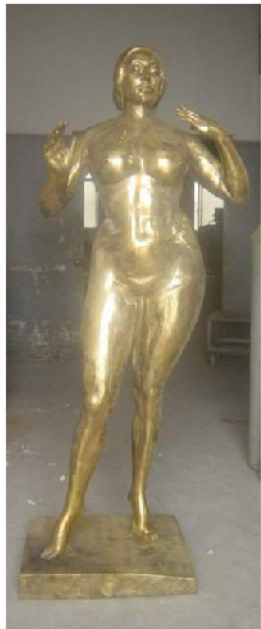
## Standing Woman. 72" 180cm.

The same technique used to create the original is now used to create your favorite piece of art.

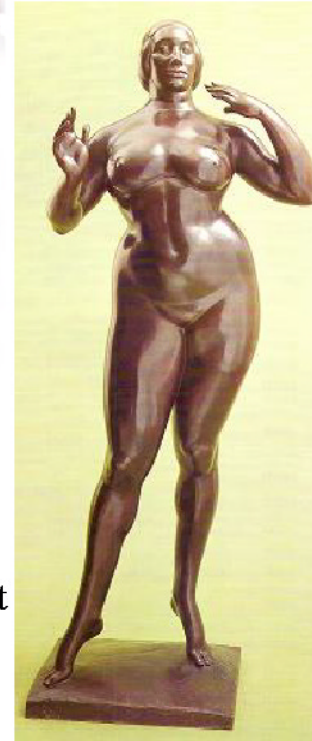
**First a clay model is made : 3/11/2005**

### Order Process

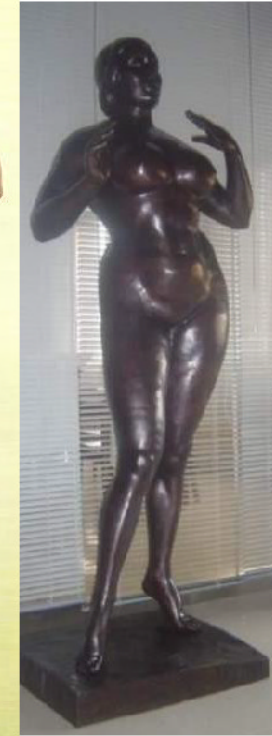
- 1- To start any project, a 30% deposit is required.
- 2- During the project we will send you images by email to keep you updated on the progress.
- 3- Once the artwork is finished we will send you more pictures.  
Upon your approval, the balance needs to be paid and the sculpture will be shipped.



**Statue removed from the cast and cleaned, before patina is applied:  
7/14/2005**



**Original**



**Finished statue-Replica  
Before shipment:9/18/2005**

**More examples**